
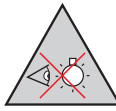


INSTALLATION GUIDE

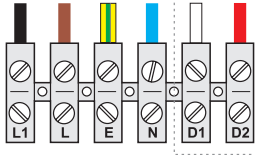




The luminaire must not be covered by any debris or insulation material



Do not stare at the LED. This can be harmful to the eyes.



Electrical termination must be carried out by a qualified electrician in accordance with the latest edition of IET wiring regulation BS7671

L1 - Permanent Live
L - Switch Live
E - Earth
N - Neutral
D1 - DALI 1
D2 - DALI 2

OPERATION & MAINTENANCE

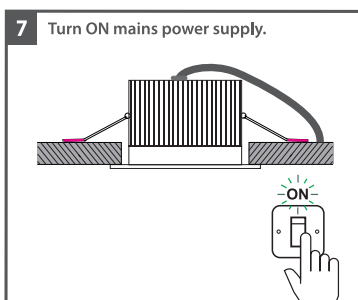
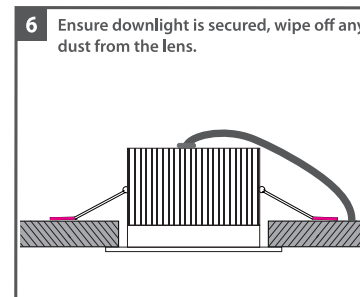
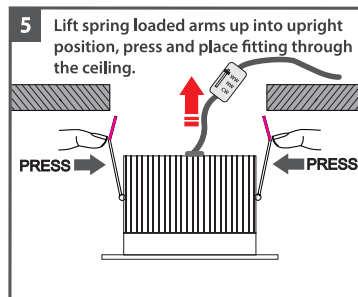
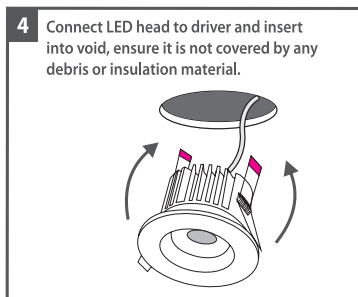
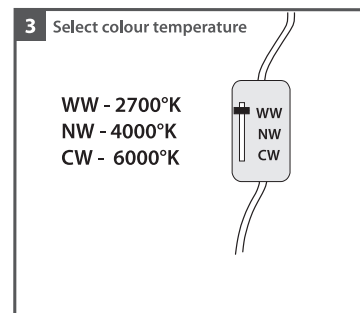
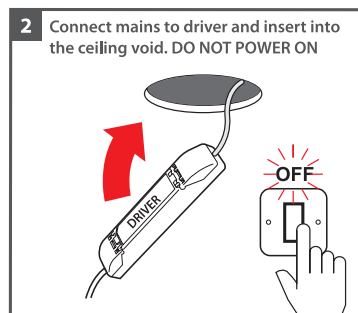
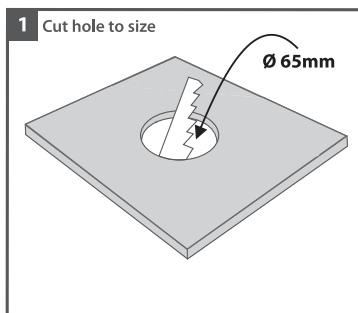
Failed LED boards **MUST** be replaced promptly or luminaire switched off to avoid possible damage to control gear. Continuous operation at mains voltage in excess of the rated voltage will reduce the expected control gear life. Clean diffuser cover periodically with soft cloth.

MODIFICATIONS

We don't recommend any modification to this product. Any modification may render the product unsafe and will invalidate any Safety/Approval marks. We will not accept any responsibility for any modified products or any damage caused as a result of their modification.

IMPORTANT SAFETY

Before carrying out any servicing on this luminaire, ensure that the mains supply is fully isolated. Disconnect luminaire before insulation testing of the installation.



PLEASE HAND THIS LEAFLET TO THE END USER



T7GLB-01